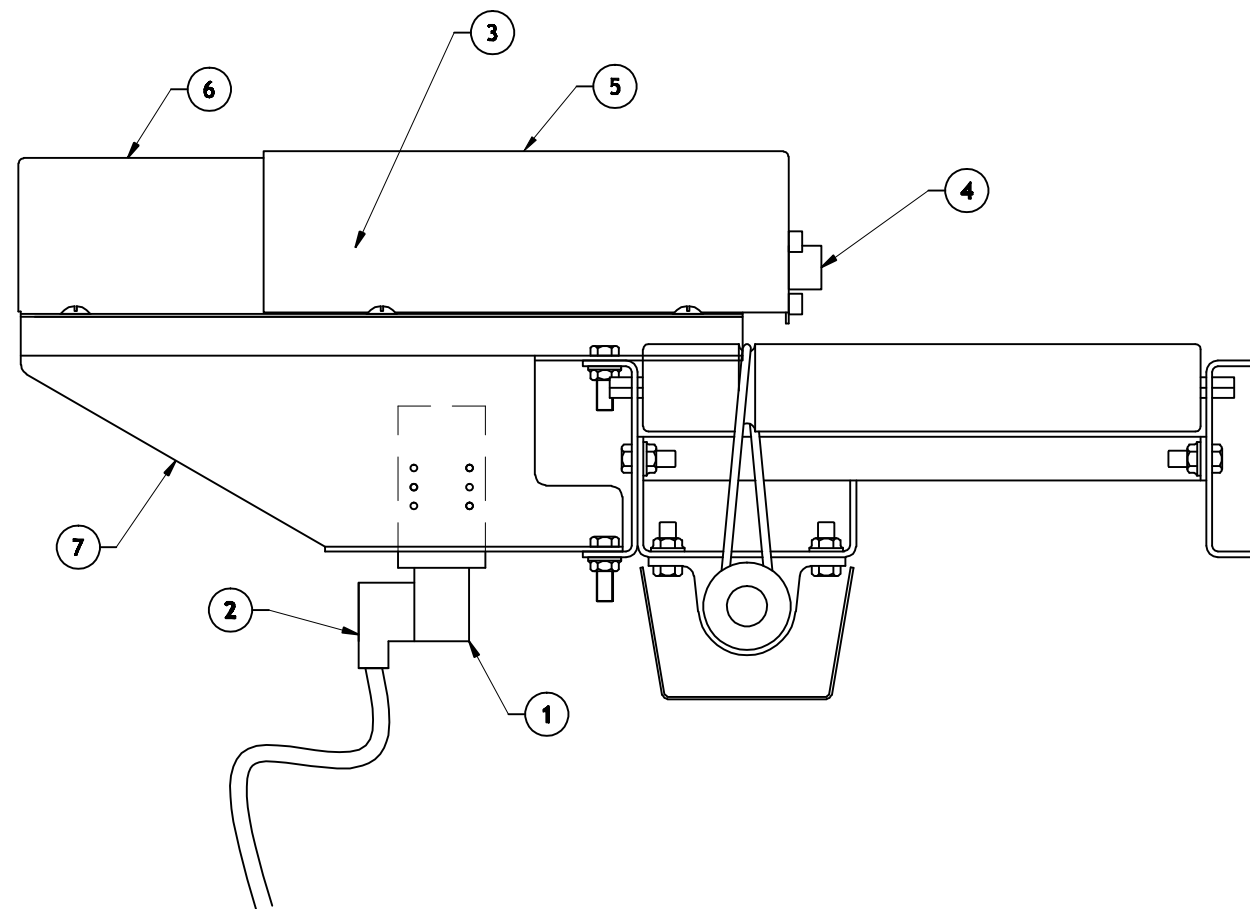


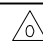
BILL OF MATERIALS			
ITEM	QTY	PART NO.	DESCRIPTION
1	1	200215	VALVE, SOLENOID, SPRING RETURN, 120VAC
2	1	600120	CORD, 6 FT LG
3	1	200216	SLIDE, LINEAR, DOUBLE ACTING, 1-1/2" BORE
4	2	900143	BUMPER, RUBBER
5	1	3246	PUSHER MOVING GUARD
6	1	3245	PUSHER STATIONARY GUARD
7	1	3244	PUSHER MOUNTING PLATE




TOLERANCES:  
 FRACTIONS  $\pm 1/16"$   
 .XX"  $\pm .02"$   
 .XXX"  $\pm .010"$   
 ANGLE  $\pm 2^\circ$   
 SURF. FINISH 250 RMS

REF. JOB NO. 1840  
 ACAD FILE: 3251

REVISION LOG			
NO.	DATE	REVISION	BY
1	X	X	X

DATE:	11-18-06
SCALE:	1/4
APPROVED BY:	
DRAWN BY:	MDS
SHEET	1 OF 1
DWG NO:	3251 



**SIERRA CONVEYOR CO., INC.**

1225 NICHOLS DRIVE, ROCKLIN, CA 916-645-7794 SIERRACONVEYOR.COM  
 CA LIC. #470982 NV LIC. # 57197

This drawing is the property of and contains CONFIDENTIAL, proprietary information of Sierra Conveyor Co., Inc. The information in this drawing is not to be copied, in whole or in part, or disclosed or used in any way detrimental to the interest of Sierra Conveyor Co., Inc., and shall be returned upon request.

**PNEUMATIC PUSHER**

**BILL OF MATERIALS**